

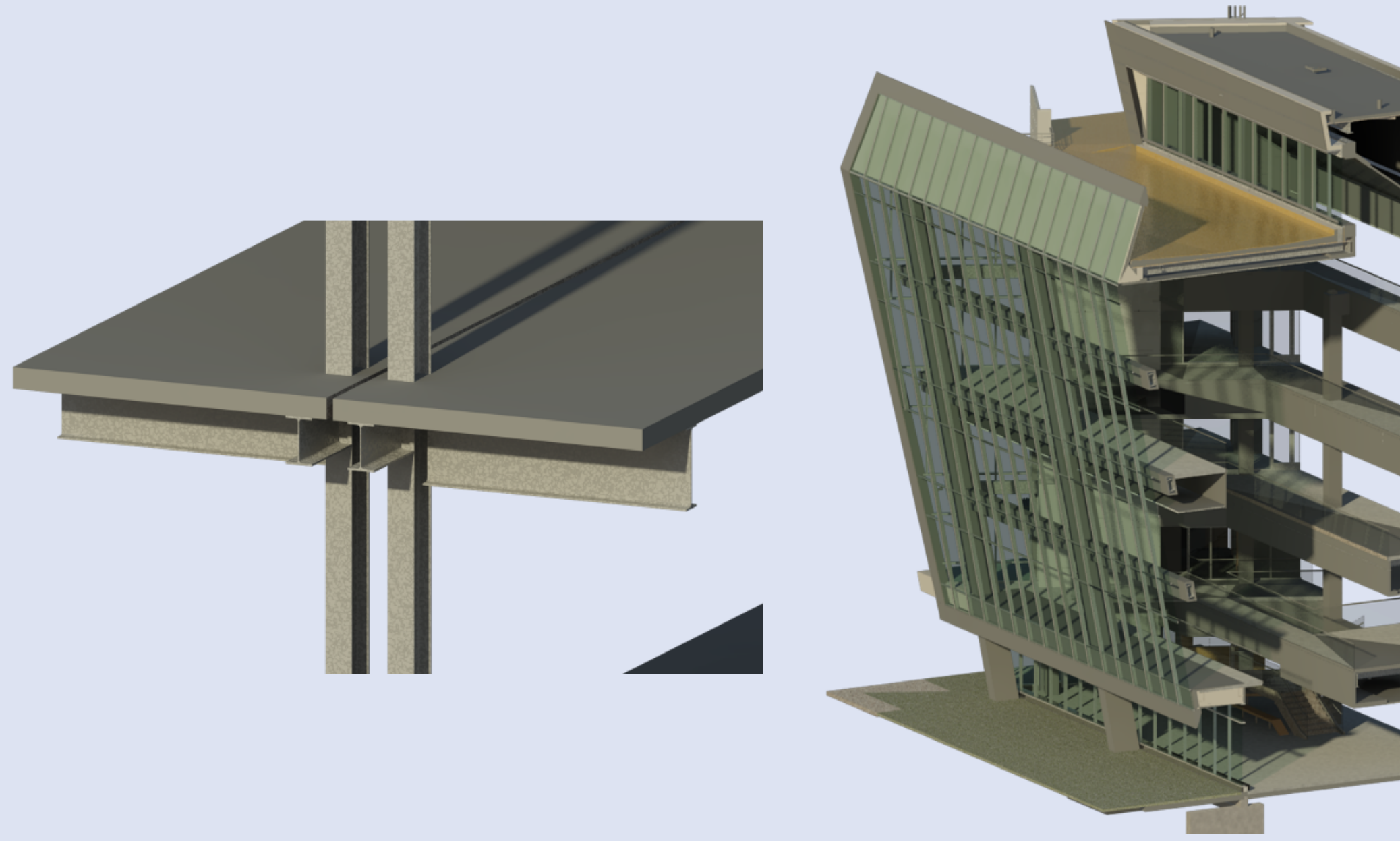
# New Regional Medical Center

East Norriton, PA

**OWNER** | einstein healthcare network  
**CM** | gilbane building company  
**ARCHITECT** | perkins & will

\$147 million  
 366,780 sf  
 July 6, 2010 – August 31, 2012

o'donnell & naccarato | **STRUCTURAL**  
 bohler engineering, inc. | **CIVIL**  
 pwi engineering | **MEPF**



utilized revit structure design authoring & alternates to evaluate design options and system costs for the atrium's curtain wall and the structural pour strip

- prefabrication of the glazing system is not cost effective for this application
- replacement of the pour strip with a expansion joint is 24% more expensive

**additional costs: \$181,253**  
**minimal schedule savings**

## DESIGN DEVELOPMENT



## PRECONSTRUCTION

utilized exported revit structure data with cost database reference to evaluate accuracy of model based-estimates

- leveraging model-based estimates requires additional modification to component parameters
- structural steel elements produce the most dependable results in quantity takeoff exports

**80% time savings**  
**up to 99.5% accuracy**



**senior thesis**  
**2011 – 2012**

**implementation of VDC methods to identify data trends in design, construction, and facility management**



## CONSTRUCTION

utilized exported revit structure data within microsoft excel pivot chart to optimize erection workflow and expense

- recognized 77% crane inefficiency
- revised the erection sequence to erect by sector with two crane, reducing the schedule by two weeks

**total project savings: \$315,727**

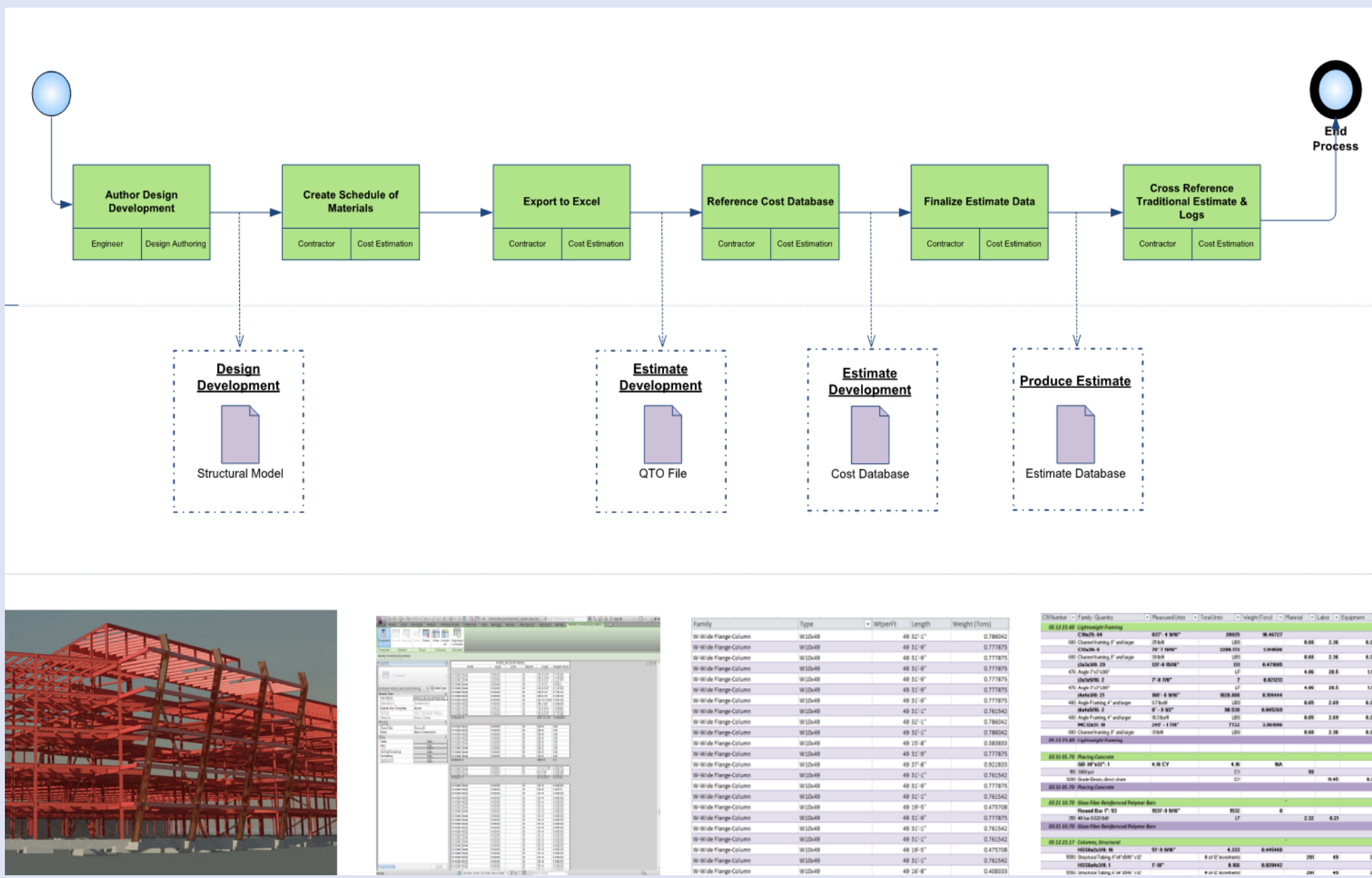


## FACILITY TURNOVER

utilized bluebeam revu, dreamweaver, and microsoft silverlight to identify methods and processes to implement various interfaces for facility document management

- achieved the goal of a single page, interactive, online collaboration interface, which provides access to updatable and variable file types

**provided feasible document turnover interface for owner development**



Critical Pick Workflow Trending By Sector

